

SA's Leading Past Year

Exam Paper Portal



You have Downloaded, yet Another Great Resource to assist you with your Studies 😊

Thank You for Supporting SA Exam Papers

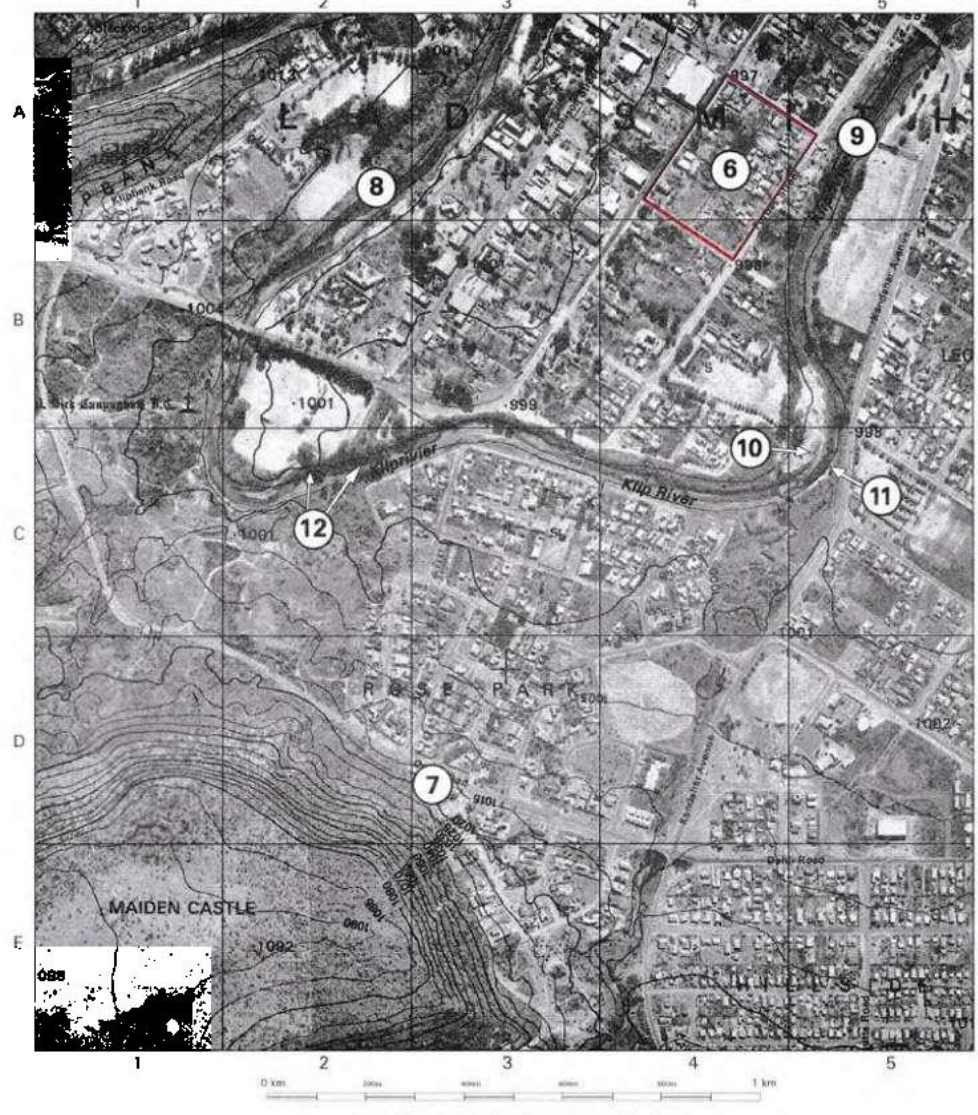
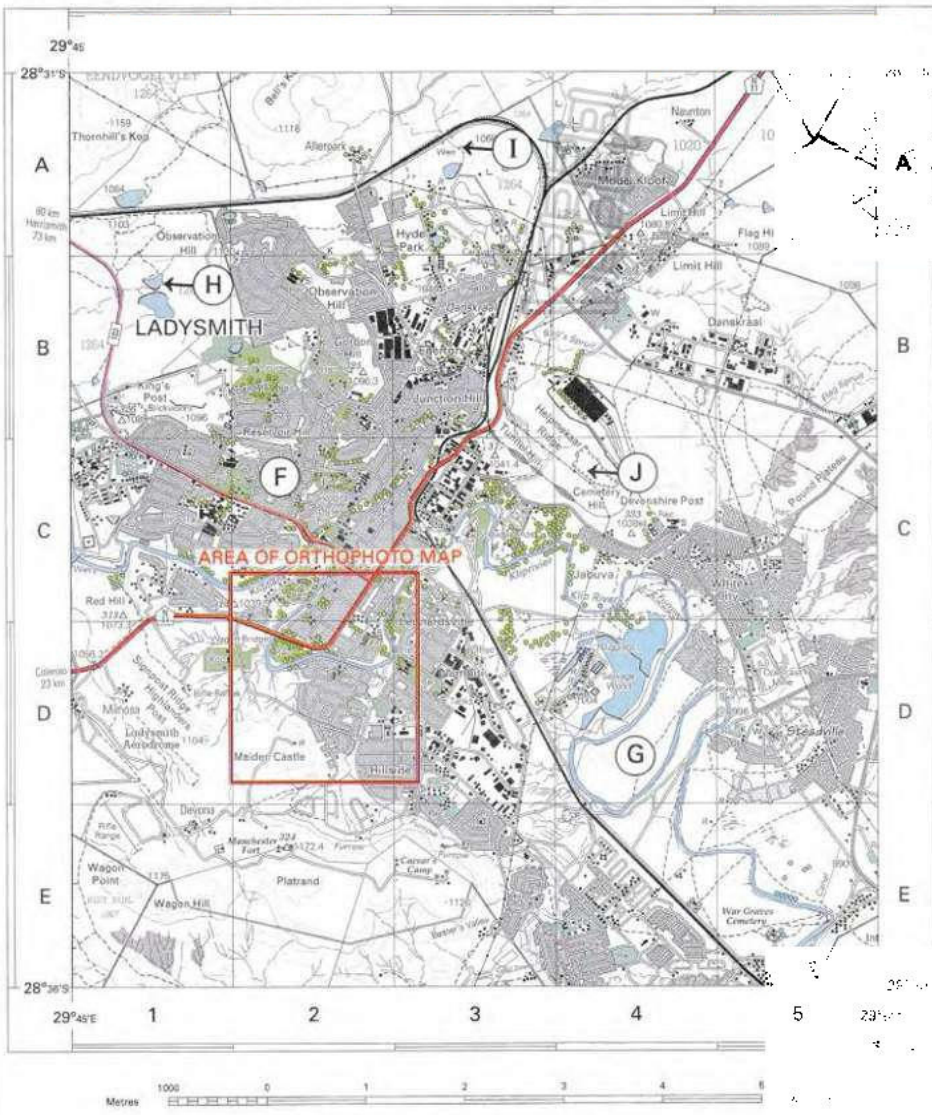
Your Leading Past Year Exam Paper Resource Portal

Visit us @ www.saexampapers.co.za



SA EXAM PAPERS

SA EXAM PAPERS
Proudly South African



Consistent magnetic declination 21°03' West of True North (July 2001).
Omskakende magnetiese verandering 21°03' Westwaarts (1995 - 2000).

Mean magnetic declination 21°03' West of True North (July 2001).
Mean annual change 8" Westwards (1995 - 2000).

CONTOUR INTERVAL 20 METRES - KONTOERTUSSER/RUIMTE 20 METERS

REFERENCE

National Freeway; National Route	International Boundary and Beacon	Fence; Wall
Arterial Route	Provincial Boundary	Windpump; Monument
Main Road	Protected Area	Communication Tower
Secondary Road; Bench Mark	Perennial River	Mine Dump; Excavation
Other Road; Bridge	Non-perennial River	Triangulation Station; Marine Light
Track and Hiking Trail	Non-Perennial Water	Cemetery; Graves
Railway; Station or Sliding	Dry Water Course	Erosion; Sand
Other Railway; Tunnel	Dry Pan	Woodland
Embankment; Cutting	Marsh and Vlei	Cultivated Land
Power Line	Pipeline (above ground)	Orchard or Vineyard
Built-up Area (High, Low Density)	Water Tower; Reservoir; Water Point	Recreation Ground
Track and Hiking Trail	Coastal Rocks	Row of Trees
Building; Ruin	Prominent Rock Outcrop	Original Farms
Post Office; Police Station; Store		
Place of Worship; School; Hotel		

CONTOUR INTERVAL 5 METRES - KONTOERTUSSER/RUIMTE 5 METERS

VERKLARING

Nasie	Internasionale Grens en Baken	Drasdhoring; Muur
Provinsiale Grens	Provinsiale Grens	Windpomp; Monument
Bewaringsgebied	Bewaringsgebied	Kommunikatortoring
Standhooudende Rivier	Standhooudende Rivier	Mynhoop; Uitgraving
Standhooudende Water	Standhooudende Water	Peilbaken; Senvaartbaken
Nie-standhooudende Rivier	Nie-standhooudende Rivier	Vuurtoring en Sevaarting
Nie-standhooudende Water	Nie-standhooudende Water	Begraafplaat; Graf
Droë Loop	Droë Loop	Erosie; Sand
Opvoeding; Oewergroening	Opvoeding; Oewergroening	Droë Pan
Moeras en Vlei	Moeras en Vlei	Beboede Gebied
Pyoplyn (bo die grond)	Pyoplyn (bo die grond)	Bewerkte Land
Watersoring; Reservoir; Waterpunt	Watersoring; Reservoir; Waterpunt	Boord of Wingard
Kustlynroete	Kustlynroete	Ontspanningsgebied
Prominente Klipbakk	Prominente Klipbakk	Rye Bone
		Oorspronklike Plaas