

SA's Leading Past Year

Exam Paper Portal



You have Downloaded, yet Another Great Resource to assist you with your Studies 😊

Thank You for Supporting SA Exam Papers

Your Leading Past Year Exam Paper Resource Portal

Visit us @ www.saexampapers.co.za





DEPARTMENT OF EDUCATION
DEPARTEMENT VAN ONDERWYS
LEFAPHA LA THUTO
ISEBE LEZEMFUNDO

**PROVINSIALE VOORBEREIDINGSEKSAMEN/
PROVINCIAL PREPARATORY EXAMINATION**

GRAAD/GRADE 12

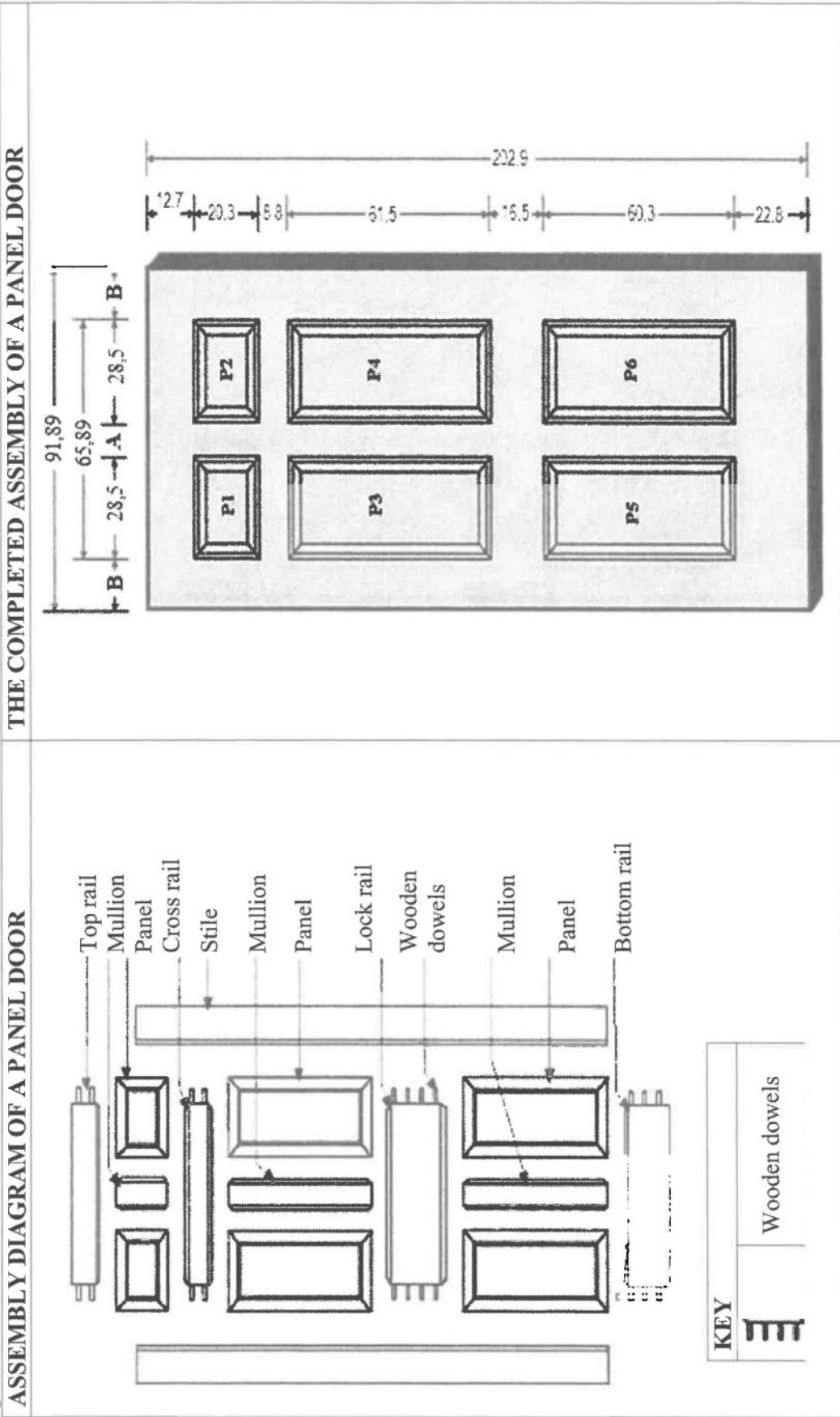
**WISKUNDIGE GEWETTERDHEID V2/
MATHEMATICAL LITERACY P2**

SEPTEMBER 2023

ADDENDUM

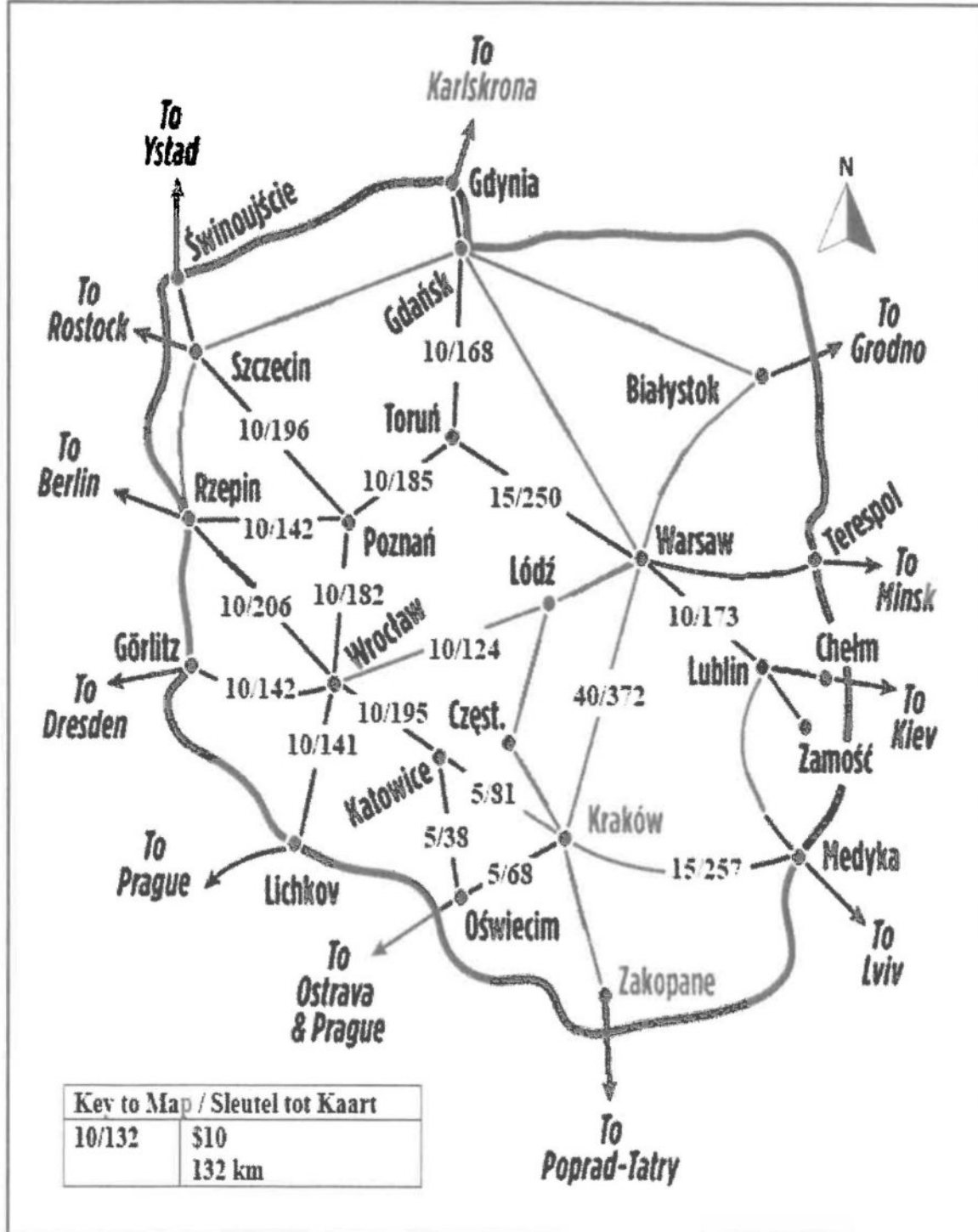
**Hierdie addendum bestaan uit 6 bladsye met 5 bylaes./
This addendum consists of 6 pages with 5 annexures.**

**ANNEXURE A
QUESTION 1.2**



ANNEXURE B
QUESTION 2.1

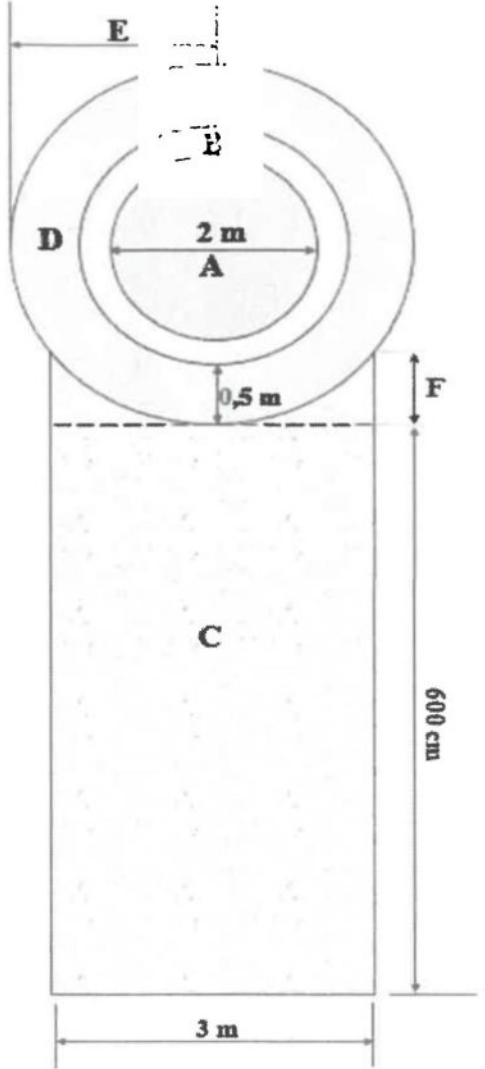

TRAIN TRAVEL MAP FOR POLAND SHOWING COST AND DISTANCES



[Adapted from [https:// www.rickstevens.com/travel.](https://www.rickstevens.com/travel/)]

ANNEXURE C
QUESTION 3

TABLE 2: A DESIGNER'S CONCEPT OF A STANDARD FISH POND

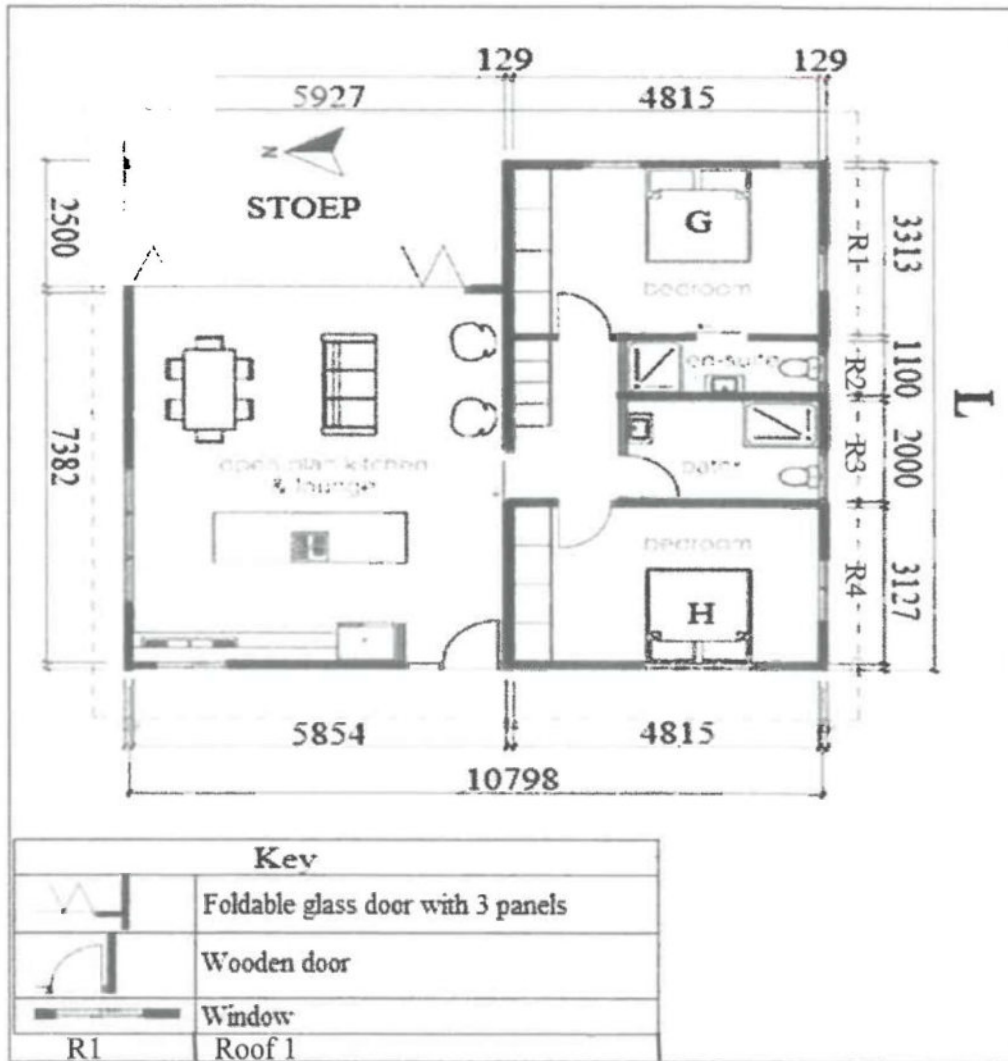
 <p>Thickness of the wall (B) is 0,1 m. Width of flower bed surrounding the pond is 0,5 m. Diameter of water pond is 2 m The gravel walkway is 3 m × 600 cm. The height of the pond is 1 metre.</p>	 <p>A- Fish Pond B- Wall surrounding the fish pond C- Gravel walk way D- Flower bed surrounding the fish pond. E - Radius of the structure F- This length is 0,5% of the length of C</p> <p>Volume of A = 3,142 m³</p> <p>[Adapted from https://forums.ardenweb.com]</p>
---	---

**ANNEXURE D
QUESTION 4.1**

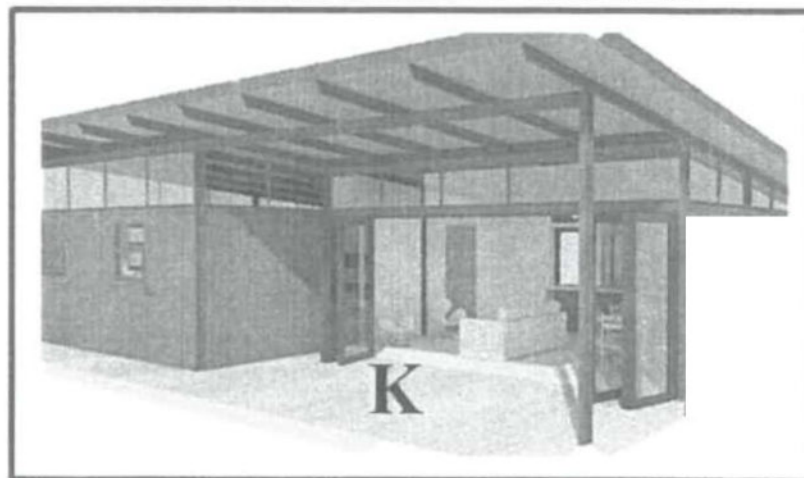
Train trip : 25 hours Days : once p/week			
Johannesburg » Cape Town		Cape Town » Johannesburg	
Travel days	Thursdays once a week	Travel days	Tuesdays once a week
Train station	Arrival	Train station	Arrival
	Departure		Departure
Johannesburg	15:00 day 1	Cape Town	09:05 day 1
Kimberley	22:43 day 1	Beaufort Wes	18:45 day 1
Beaufort Wes	07:00 day 2	Kimberley	02:40 day 2
Cape Town	16:15 day 2	Johannesburg	11:03 day 2
Month	Feb/Mar	Jul/Aug	Sep/Oct/Nov
Tariff	R690,00	R690,00	R690,00
R830,00			
Fees per passenger one way. Season time: December and January			

ANNEXURE E
QUESTION 5.1

FLOORPLAN



ELEVATION OF A SIDE OF THE HOUSE



[Adapted from <https://www.pinterest.com>]