

SA's Leading Past Year

Exam Paper Portal



You have Downloaded, yet Another Great Resource to assist you with your Studies 😊

Thank You for Supporting SA Exam Papers

Your Leading Past Year Exam Paper Resource Portal

Visit us @ www.saexampapers.co.za





education

Department:
Education
North West Provincial Government
REPUBLIC OF SOUTH AFRICA

**NATIONAL
SENIOR CERTIFICATE**

GRADE 12

MATHEMATICAL LITERACY P2

ADDENDUM

SEPTEMBER 2023

This addendum consists of 6 pages with 5 annexures.

ANNEXURE A

QUESTION 2.1

DOMESTIC FLIGHTS - SOUTH AFRICA.



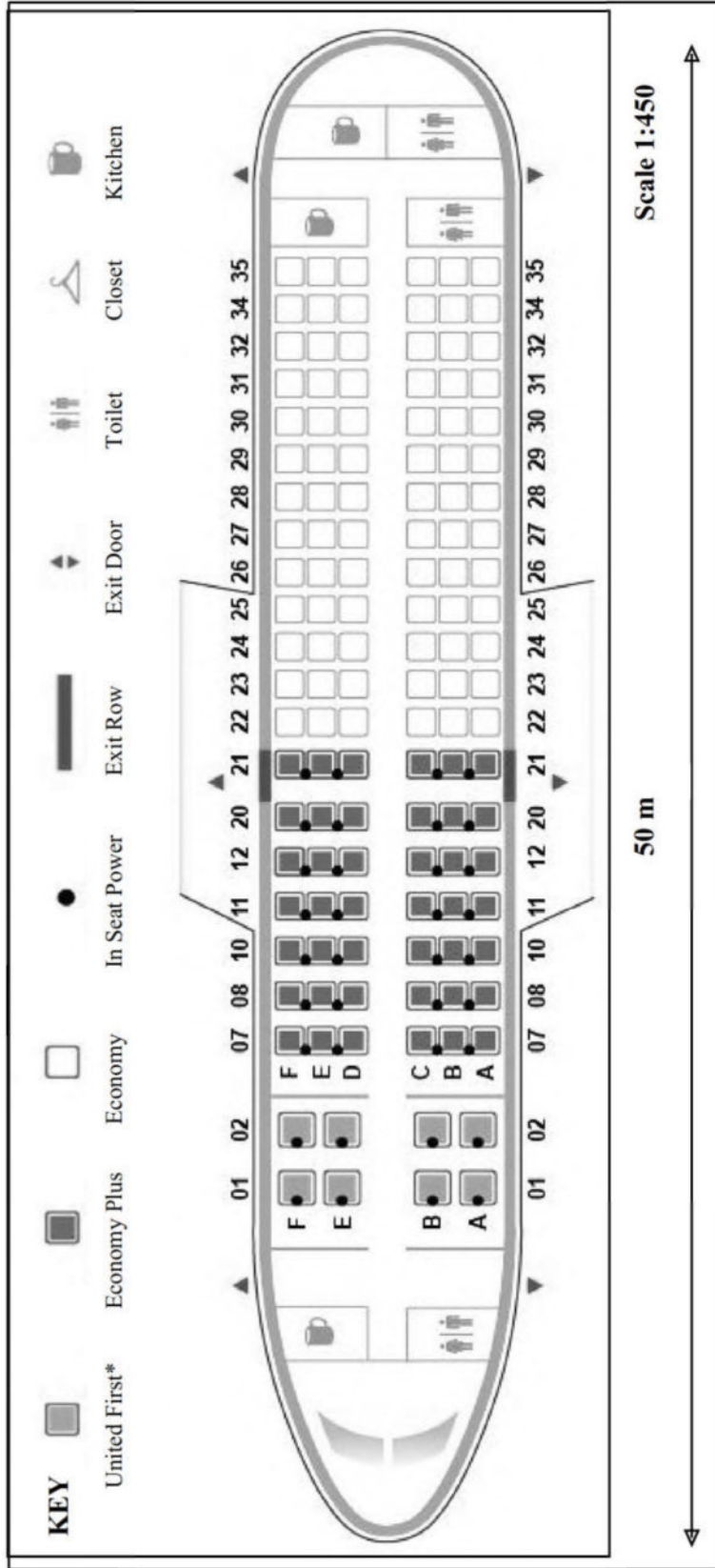
[Adapted from *Visiting Kruger National Park*]

KEY:



ANNEXURE B

QUESTION 2.2 – LAYOUT OF A PASSENGERS AEROPLANE: AIRBUS A380

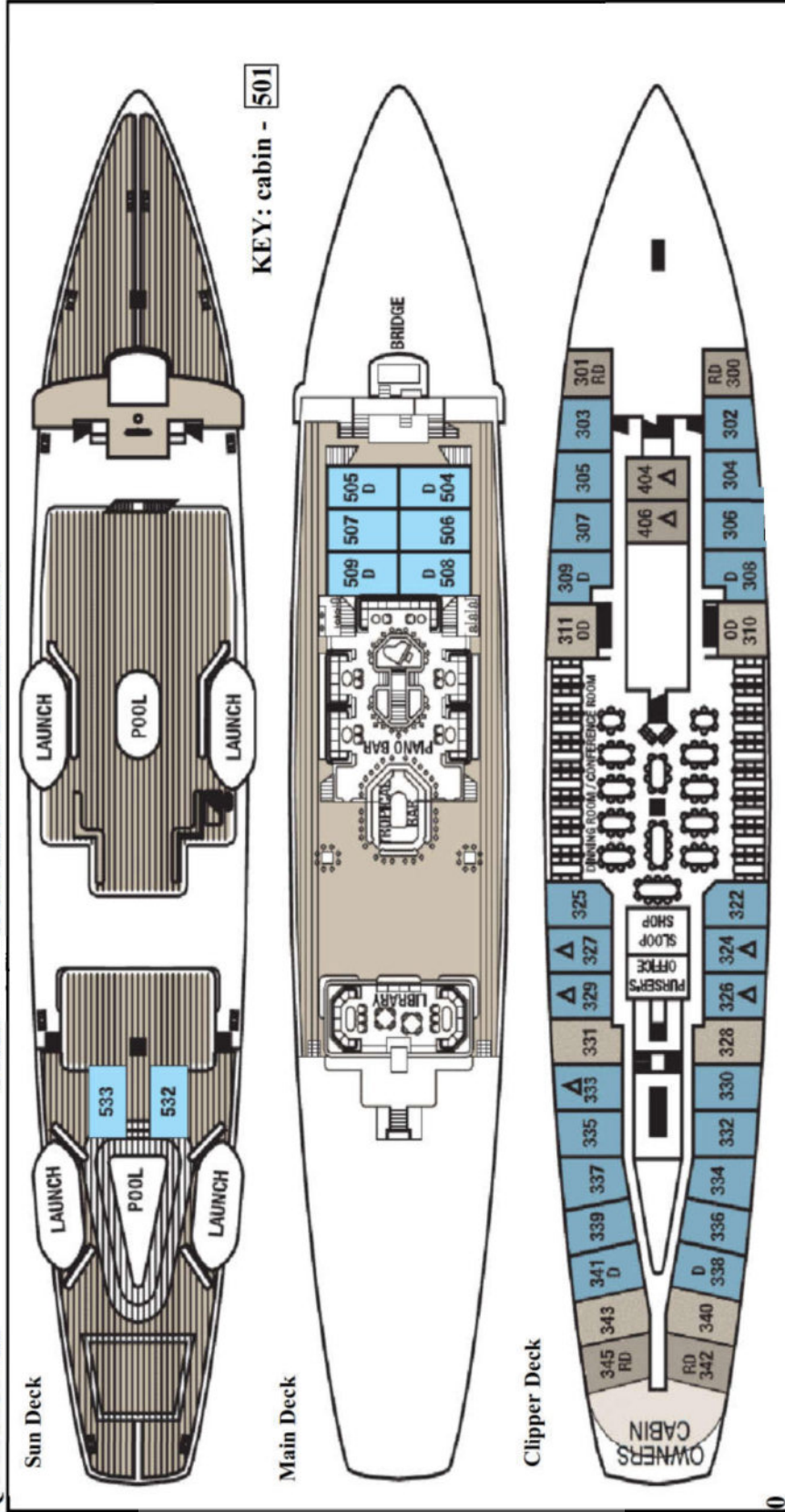


[Adapted from *Different Aircraft Layouts*]

ANNEXURE C

QUESTION 4.1

STAR FLYER CRUISE SHIP DECK PLANS



[Adapted from starclippercruises.co.uk]

NOTE: Only the Commodore deck and Clipper Deck have windows. Each cabin on these two decks have only 1 window per cabin, except for cabins in the middle of the ships with NO windows, due to privacy.

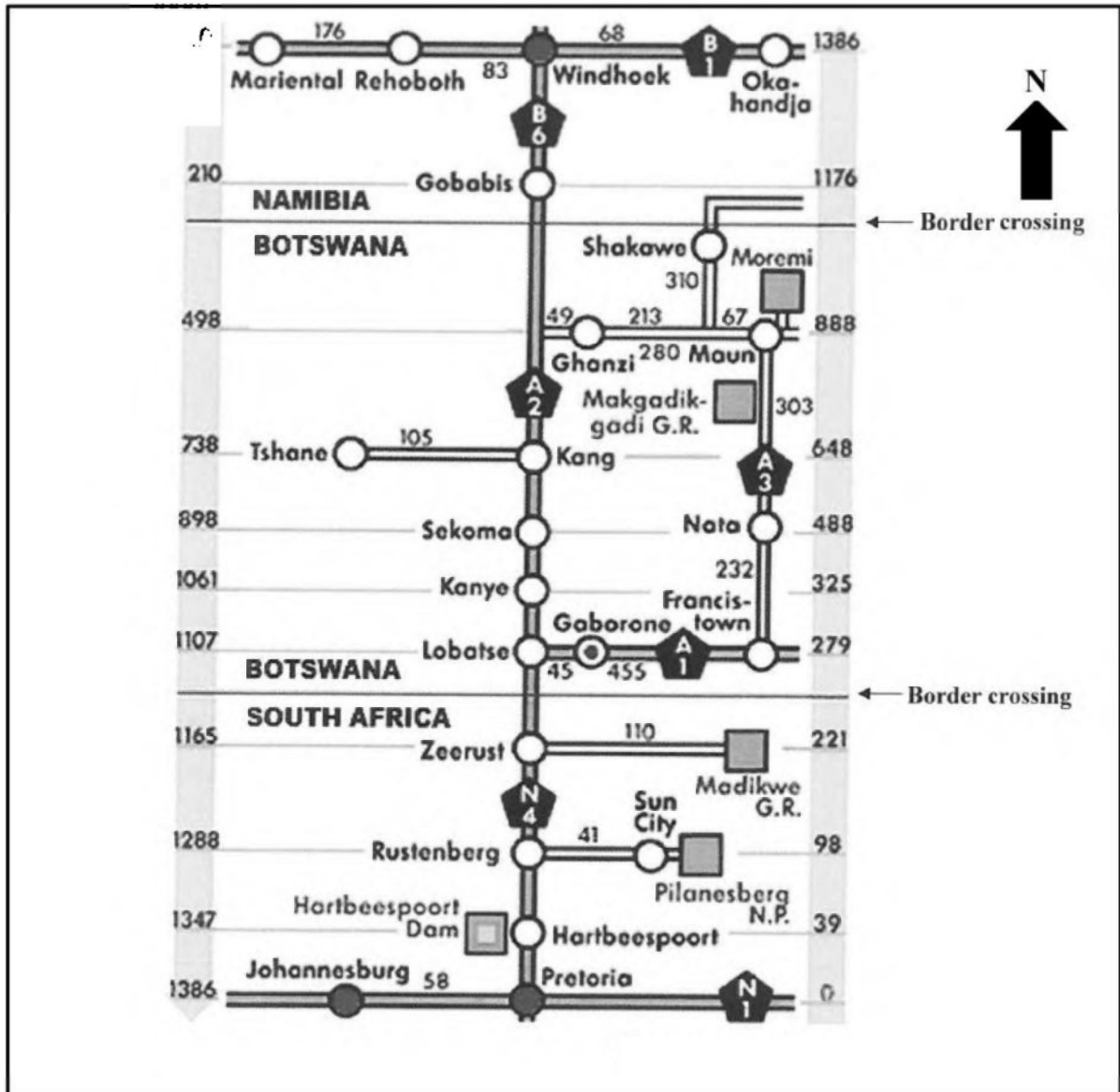
Copyright reserved

Please turn over

ANNEXURE D

QUESTION 5.1

STRIP CHART SHOWING ROAD DISTANCES IN KILOMETRES FROM WINDHOEK TO PRETORIA



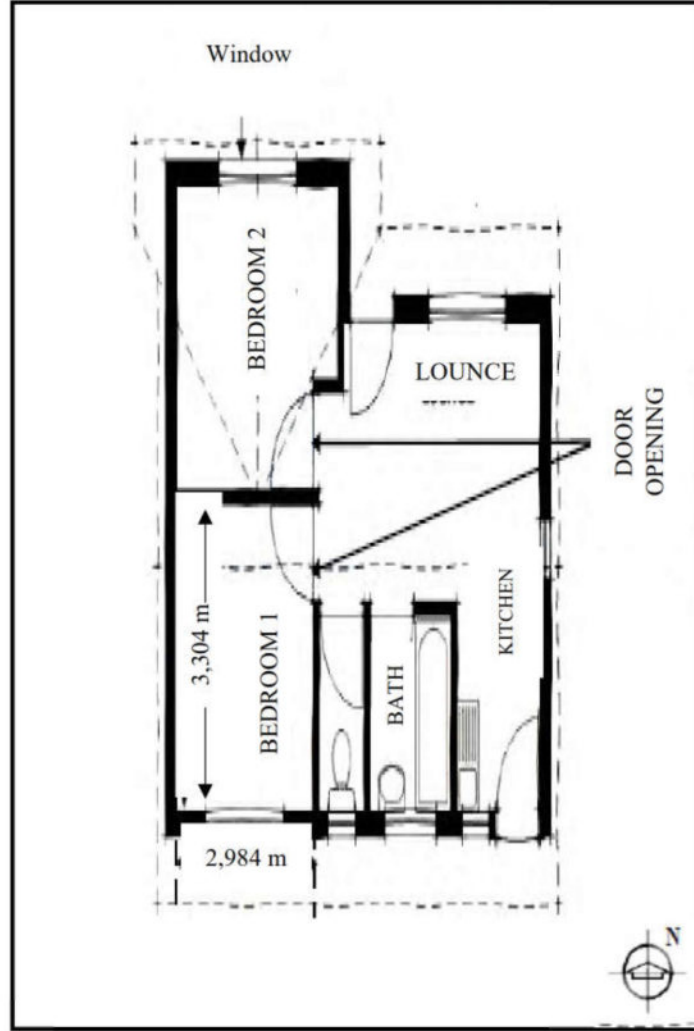
[Adapted from www.google.com]

KEY

SYMBOL	DESCRIPTION
■	Places of interest
⬠ N or A or B	National Roads
GR	Game reserve

ANNEXURE E**QUESTION 5.2**

THE DIAGRAM BELOW IS THE LAYOUT OF TOM'S HOUSE.



[Adapted from SA House Plans]

The dimensions of the windows in each bedroom are 170 cm × 140 cm
The height of a door opening is 2,14 m.

Copyright Reserved