

SA's Leading Past Year

Exam Paper Portal

STUDY

You have Downloaded, yet Another Great Resource to assist you with your Studies 😊

Thank You for Supporting SA Exam Papers

Your Leading Past Year Exam Paper Resource Portal

Visit us @ www.saexampapers.co.za



SA EXAM
PAPERS



basic education

Department:
Basic Education
REPUBLIC OF SOUTH AFRICA

NATIONAL SENIOR CERTIFICATE

IBANGA 12

ISIXHOSA ULWIMI LOKUQALA OLONGEZELELWEYO (FAL)

IPHEPHA LOKUQALA (P1)

NOVEMBA 2017

AMANQAKU: 80

IXESHA: liyure 2

Olu viwo lunamaphepha ali-12.

IMIYALELO NENGCACISO

1. Eli phepha lemibuzo linamaCANDELO AMATHATHU angala:

ICANDELO A: Uvavanyo lokuqonda	(30)
ICANDELO B: Ushwankathelo	(10)
ICANDELO C: Izakhi nemigaqo yokusetyenziswa kolwimi	(40)
2. Phendula YONKE imibuzo.
3. Qala ICANDELO NGALINYE kwiphepha ELITSHA.
4. Krwela umgca ekupheleni KWECANDELO NGALINYE.
5. Nombola iimpendulo zakho ngokuchanekileyo ngokwendlela yokunombola esetyenzisiweyo kwiphepha lemibuzo.
6. Shiya umgca emva kwempendulo NGANYE.
7. Qwalasela ngokukodwa upelo nolwakhiwo lwezivakalisi.
8. lingcebiso malunga nolwabiwo lwexesha:

ICANDELO A: Imizuzu engama-50	
ICANDELO B: Imizuzu engama-20	
ICANDELO C: Imizuzu engama-50	
9. Bhala ngokucocekileyo nangokucacileyo.

ICANDELO A: UVAVANYO LOKUQONDA**UMBUZO 1**

1.1 Funda esi sicutshulwa uze uphendule imibuzo elandelayo.

ISICATSHULWA A**IKHAYA**

- | | | |
|---|--|---------------|
| 1 | <p>Ikhaya asiyiyo indawo apho umntu aqhusheka khona intloko lakutshon'ilanga, alale arhone, kanti ukuphuma kwalo uya kulahleka angaziwa nokuba utshone kweliphi na icala. Ikhaya kulapho umntu alulekwa khona, asukwe okwesikhumba senkomo sisukelwa ukuba sibe luncedo. Umntu osuka kwikhaya elingakwazanga ukumakha ufana <u>nesikhumba senkomo esingasukekanga</u> esiyinto nje izinja ezixhuthana ngayo. Ikhaya asiyonto enye nomzi yaye umahluko mkhulu phakathi kokwakha ikhaya nokwakha umzi. Izinto zokwakha umzi zininzi yaye umzi uyakhiwa ugqitywe bahlawulwe abakhi bahambe bayokwakha kweny'indawo. Umzi uthi sewugqityiwe ukwakhiwa baxakeke abantu bawo besenza unako-nako bezama ukuba lo mzi unganeli nje ukuba ngumzi koko ubeyindawo yokukhongozela abantu bekhaya. Njengokuba umzi wakhiwa ngezitena nodaka nje, ikhaya lona alakhiwa ngezi zinto yaye ikhaya aligqitywa ukwakhiwa. Indoda nomfazi bayakwazi ukungena endlwini bahlale kuyo iminyaka ngeminyaka besakhana nekhaya.</p> | 5
10
15 |
| 2 | <p>Ikhaya kulapho abantwana bangena khona ngomzimba okhululekileyo. Oku kukhululeka kwabantwana kuzalwa sisiqinisekiso sokuba xa bengene kulo bangene kumqolomba wokubakhusela kwizinto ezininzi. Nokuba umntwana sele esukelwa ngabanye befuna ukumbetha akubalekela kowabo uqinisekile ukuba ufike kwindawo akhuseleke kuyo. Ikhaya likhosi labantwana apho bangakhonkothwa nayinja. Kumntwana okhulela ekhayeni lokwenene akukho ndawo inolonwabo njengekhaya. Umntwana unokukhulela emzini wamahlwempu koko nobo buhlwempu abukwazi ukumenza umntwana afune ukuya kuhlala komnye umzi. Umntwana uyakwazi ukuya kudlala nabantwana bomzi othile achith' imini yonke kuloo mzi esazi ukuba uphambukele kuwo okwexeshana. Lakufika ixesha lokugoduka ushiya kwanto angqale kowabo.</p> | 20
25 |
| 3 | <p>Umntwana ongena emzini akadubuleki nje koko uyankqonkqoza aze ayalelwe ukuba makangene. Ukunkqonkqoza oku yindlela yokubuza ukuba wamkelekile na kuloo mzi. Usenokunkqonkqoza axelelwe ngabantu baloo mzi ankqonkqoza kuwo ukuba akamkelekanga. Zonke ezi nquleqhu umntwana azenzayo ukuba amkeleke emzini othile akazenzi ekhayeni lakhe. Umntwana ungena kowabo egibiselekile engankqonkqozanga kuba kaloku unebango analo kweli khaya, bango elo angenalo komnye umzi.</p> | 30
35 |

4	Kweli khaya umntwana ngamnye unesabelo sakhe. Umntwana angavinjwa ukudla komnye umzi kodwa kowabo unelungelo lokuphakelwa. Xa kuphakwa umntwana ngamnye unesithetyana nje esisesakhe sokudla. Naxa engekho, oko kudla kwakhe kuyogqunywa ngobunono kugcinwe ngocoselelo. Kuyenzeka kwamanye amakhaya ukuba umntwana ngamnye abe nesitya esijonge yena ngqo. Nezimbo abantwana beli khaya abadla ngazo ziyaziwa. Uyaziwa umntwana ongcathu kanti nohobolozela ngokunjalo. Xa kuphakelwa uhobolozela eso sitya sakhe siyankqongiswa sithwaliswe loo mthwalo usongameleyo ngathi sisithuthi sikasomashishini othengisa kwanto kwishishini lakhe.	40
5	Abantwana banelungelo ekhayeni labo, ilungelo abangenakulilindela emzini. Umntwana ngamnye uba nesilili sakhe sokulala. Umntwana olele endaweni engasiyiyo yakhe akacelwa nokucelwa koko uyaxelelwa ngomnye esithi, 'Suk'endaweni yam.' Kungenjalo uyayalelwa kuthiwe, 'Bhekela phaya'. Ikhaya kulapho umntwana ngamnye anendawo yakhe. Umntwana unebango kule ndlu ahleli kuyo kanti ukwanebango nakwiintliziyo zabazali bakhe. Umntwana xa ekhalaza ukuba umzali wakhe wenzele uNobani le, nale, yindlela leyo umntwana abanga ngayo indawo yakhe entliziyweni yomzali wakhe. Uthando lomzali asinto inokuthululelwa iphelele emntwaneni omnye bekho nabanye.	50 55
6	Ikhaya kulapho abantwana bahluthayo nokuba sekuhlutshekiwe. Into ehluthisa abantwana asizizo izitya eziza zinkqongisiwe ngathi kuphakelwa umntu ovela kuhlakula. Umntwana uyahlutha ukutya kukuncinane ehluthiswa nje kukuthatha eso sitya kwizandla ezinothando. Uthando luyakwazi ukuhluthisa. Ikhaya ke kulapho abantwana bangondliwa ngomngqusho kuphela koko nangothando. Olu thando luyakwazi ukubatyhutyha abantu bekhaya besokhelelana ngalo. Umntwana uyakwazi ukucela omnye esithi, 'Khawundikhelele amanzi ndisele.' Kwikhaya elingenathando lowo uthunywayo ufanel'ukuphendula ngelithi, 'Wena awunazandla?'	60 65

[Sicatshulwe kwincwadi, *Kungaqhuma Kubasiwe*; nguLL Ngewu; iphepha 8–10 saze sahlelwa.]

Jonga kumhlathi 1

- 1.1.1 Liyintoni ikhaya ngokwalo mhlathi? (1)
- 1.1.2 Linika ngcinga ni ibinzana elikrwelelwe umgca ngaphantsi ngomntu osuka kwikhaya elingakwazanga kumakha? (2)
- 1.1.3 Chaza umahluko phakathi komzi kunye nekhaya. (2)
- 1.1.4 Chonga naliphi igama elithetha ukuba ukwakha ikhaya sisenzo esingapheliyo. (1)

Jonga kumhlathi 2

- 1.1.5 Nika isizathu esibangela ukuba abantwana bangene ngomzimba okhululekileyo ekhaya. (1)
- 1.1.6 Wenza ntoni umntwana lakufika ixesha lokugoduka? (1)

1.1.7 Libonakala ngantoni ikhaya lokwenene? (2)

Jonga kumhlathi 3

1.1.8 Nika ingcamango ephambili yalo mhlathi. (2)

Jonga kumhlathi 4

1.1.9 Libonakaliswa njani ilungelo lomntwana othe waphoswa lixesha lokudla? (1)

1.1.10 Nika intsingiselo yegama elibhalwe ngqindilili kwesi sivakalisi singezantsi.
... uyaziwa umntwana **ongcathu**. (1)

1.1.11 Khetha ibinzana elisetyenziswe ngenjongo yokuphoxisa kwisivakalisi esingezantsi.
Xa kuphakelwa uhobolozela eso sitya sakhe siyankqongiswa sithwaliswe loo mthwalo usongameleyo ngathi sisithuthi sikasomashishini othengisa kwanto kwishishini lakhe. (2)

Jonga kumhlathi 5

1.1.12 Xela ilungelo abangenakulilindela emzini abantwana. (1)

1.1.13 Umzali angakubonakalisa njani ukungabi namkhethe kwabanye abantwana? (2)

Jonga kumhlathi 6

1.1.14 Khetha impendulo echanekileyo kwezi zingezantsi. Igama elibhalwe ngqindilili kwesi sivakalisi, 'Ikhaya ke kulapho abantwana bangondliwa ngomngqusho kuphela koko **nangothando**' liphuhlisa ...
A ukuxhomekeka.
B ukunxulumanisa.
C ukongeza.
D ukungathiza. (1)

1.1.15 Uyavumelana na noluvo oluthi uthando luyahluthisa? Xhasa impendulo yakho. (2)

Kwitekisi yonke

1.1.16 Yahluke njani indlela ekuqaganjiswe ngayo ukukhululeka komntwana kwikhaya lakhe kumhlathi wesi-2 kwekumhlathi wesi-3? (2)

1.2 Funda lo mfanekiso ungezantsi uze uphendule imibuzo elandelayo.

ISICATSHULWA B: OKUBONWAYO



[Uthathwe kwi-livewellmagazine.org]

- 1.2.1 Xela zibeMBINI iindidi zabantu abakulo mfanekiso. (2)
- 1.2.2 Chaza uvakalelo lwabantu abasemfanekisweni. Xhasa impendulo yakho. (2)
- 1.2.3 Libonakala njani eli khaya ukuba likhaya elingenamkhethe? (2)

AMANQAKU ECANDELO A: 30

ICANDELO B: USHWANKATHELO**UMBUZO 2**

Funda esi sicutshulwa silandelayo ze usishwankathele ngeengongoma ezisixhenxe unika iimpawu zembongi.

IMIYALELO

1. Isishwankathelo sakho masibe kwimo yokudwelisa iingongoma.
2. Dwelisa iingongoma eziphambili ezisi-7 ubude bungadluli kuma-60 amagama.
3. Nombola iingongoma zakho ukusuka ku-1 ukuya ku-7.
4. Bhala iingongoma nganye kwisivakalisi esiNYE.
5. Sebenzisa amazwi akho kangangoko.
6. Bhala inani lamagama owasebenzisileyo kwizibiyeli ezantsi kwesishwankathelo.

ISICATSHULWA C**IMBONGI**

Ngumntu onjani ke lo kuthiwa yimbongi? Ngumnyulwa onganyulwanga mntu, owanyulwa zizinyanya zimnyulela isizwe, nguQamata ukutsho oko. Ngumntu okufutshane ngobukhulu kubantu abangabathanjiswa bakaQamata, iinkosi neekumkani.

Njengokuba imbongi ingumntu oyedwa wofika aba bantu baziimbongi nezithomo zabo zingathi zalungiselelwa lo msebenzi. Apho basebenza khona kuphakathi kwezihlwele ezingahlanganiswe ngumcimbi omnye, mhlawumbi owovuyo nolonwabo, owosizi, owonqulo neminye ke.

Imbongi asimntu usebenza ngasicwangciso-nkqubo, le nto kuthiwa yi*programme*. Imbongi ngumntu oya kusuka ahlahlambe ngelo xesha kusuke kwafika ngalo into ethi makabonge. Nenzwi leyo uya kuzicelela ngendlela le awuvula ngayo umlomo.

Aba ngabantu abamazwi asuka abe ngathi alungiselelwa lo msebenzi. Uya kufika izizinto ezimazwi atsho kuhlokome iintili namawa apho zithe zayivula khona imilomo. Kunqabile ukuba uve imbongi etsho ngelizwana elikhenkcezayo okanye elideke-deke okanye elithintithayo.

Esi siphiso sokubonga sisiphiso esihambelana nezinye iziphiso ezimenza lowo uyimbongi abe yiyo gqibi. Kufanelekile ukuba abe njalo kuba njengomntu ongumthunywa wezinyanya ngumntu ongumfundisi. Ufundisa ngeyona ndlela inyulu yokudla ubomi, ngumnqwanqwadi wezinto ezityekayo emendweni wonqulo. Ngumncomi nomkhuthazi wezo zithe tonono ukuhamba ngomendo wonqulo.

Inggondo kufuneka inkqenkqoze phambili, khon'ukuze akwazi ukubona ukuba isiganeko ngasinye siya kuzala nkomo ni, aze alumkise, athuthuzele ngokuyibona kwakhe imeko leyo ingekabonwa ngamehlo abona kufuphi.

Neliso eli lenyama apha kwimbongi liliso elisololo kakhulu. Kwizinto zendalo ezibonakala kumntu wonke imbongi yona wofika ibona izinto ezizezinye nezingabonwayo ngamehlo abanye abantu. Kubuhle bendalo esithi sityebise nje amehlo ngabo, imbongi yona iya kubona ubungangamsha beTshawe. Ubuciko bukwalapha.

[Sithathwe kwincwadi, *Imfincamfincane* lbalwe, nguZS Zotwana; iphepha 62–64, saze sahlelwa]

ICANDELO C: IZAKHI NEMIGAQO YOKUSETYENZISWA KOLWIMI**UMBUZO 3: ISIBHENGEZO-NTENGISO**

Funda esi sibhengezo-ntengiso uze uphendule imibuzo elandelayo.

ISICATSHULWA D

IINKONZO ZOKUCOCA ZAKWAVUSI

Phola...sikucocele. Singoongqa phambili! Amaxabiso ethu ayafikeleleka.

**FONELA KU
086 4444 321
NGOKU!**

**Ukucoca kuthi
nguABC!**

**FUMANA: Ezona nkonzo
ziphucukileyo! Abasebenzi
abaziingcungela nabanobubele!**



[Sithathwe ku-googleimages.com saze sahlelwa]

- 3.1 Nika isixhobo sonxibelelwano onokusisebenzisa xa ufuna le nkonzo ithengiswayo. (1)
- 3.2 Ngoobani abanokuchukumiseka lula sesi sigama sithi, 'Phola ... sikucocele', kwesi sibhengezo-ntengiso? (1)
- 3.3 Khetha impendulo echanekileyo kwesi sivakalisi singezantsi. UABC okwisilogani usetyenziselwe ukunika intsingiselo ethi: (1)
- A Ukucoca kule nkampani yinto yokuqala.
B Ukucoca kule nkampani kufunyanwa mahala.
C Ukucoca kule nkampani yinto elula.
D Ukucoca kule nkampani kwenziwa rhoqo.

- 3.4 Ngcinga ni etyhilwa kukusetyenziswa komfanekiso womntu ongumama kwesi sibhengezo-ntengiso? Xhasa impendulo yakho. (2)
- 3.5 Xela iimpawu zibeMBINI abanazo abasebenzi bale nkampani. (2)
- 3.6 Caphula igama eliNYE elithetha ukuba azikho ezinye iinkonzo eziphucukileyo kunale. (1)
- 3.7 Ucinga ukuba singabanceda njani abathengi esi sibhengezo-ntengiso? (2)
- [10]**

UMBUZO 4: UKUCAZULULA IKHATHUNI

Funda le khathuni uze uphendule imibuzo elandelayo.

ISICATSHULWA E



[Ithathwe ku-www.davegranlund.com yaze yahlelwa]

- 4.1 Aluphawu lwantoni amachaphaza amathathu ekupheleni kwentetho kaBen yoku-1? (1)
- 4.2 Xela into ibeNYE ebonisa ukuba yiTV le ijongwe nguSam. (1)
- 4.3 Chaza indlela abesenza ngayo imithambo uBen ukukhula kwakhe ngokwentetho yakhe yesi-2. (2)

- 4.4 Chonga igama elinika intsingiselo yokuba yayingekho enye indlela yokutshintsha itshaneli yeTV, kwintetho yesi-2. (1)
- 4.5 Inkangeleko yobuso bukaSam ibonisa ntoni ngaye? (1)
- 4.6 Nika ijelo leendaba elisetyenziswe ngumzobi wekhathuni ukuxhasa umyalezo wakhe. (1)
- 4.7 Khetha impendulo echanekileyo kwezi zingezantsi. Injongo yokusetyenziswa kothlekiso phakathi koBen noSam kule khathuni kukuba:
- A Umzobi unenjongo yokuxhasa.
B Umzobi unenjongo yokugxeka.
C Umzobi unenjongo yokuthuma.
D Umzobi unenjongo yokuncoma. (1)
- 4.8 Chaza ukuba umzobi wekhathuni udlulisa wuphi umyalezo ngabantwana nabantu abadala. (2)
- [10]**

UMBUZO 5: IPROZI

- 5.1 Funda esi sicutshulwa uze uphendule imibuzo elandelayo.

ISICATSHULWA F

Galakangqa, kwangena ufafa olude lomfana, into emnyama ukusuka esihlangwini ukuyokuphosa elunweleni. Into emkhitha ngathi ngowenkabi yehashe. Obo bumnyama babuphazanyiswe lithambo elimhlophe elalibhijele umqala lifuna ukumfanisa nehlungulu, kwakunye naloo mazinyo amhlophe ayemana ukuthi menye kobo buso babuzele uncumo olwaluntama uthando olungazenzisiyo kumninibo. Yayingumfundisi. Ebusweni wayetsho ngesiva esasixwese isidlele, simfanele ndithetha enga wazalwa naso. 5

Uthe akungena lo mfo wabonakala ephakama utitshala esihlalweni emhlangabeza, kucaca ukuba uyamfanisa. Akufika kuye wolula isandla embulisa, wenjenjalo nomhambi, **baxhawulana**. 10

'Tyhini bhota Thole!' watsho utitshala esixhuzu-xhuzula isandla somhambi ehleka.

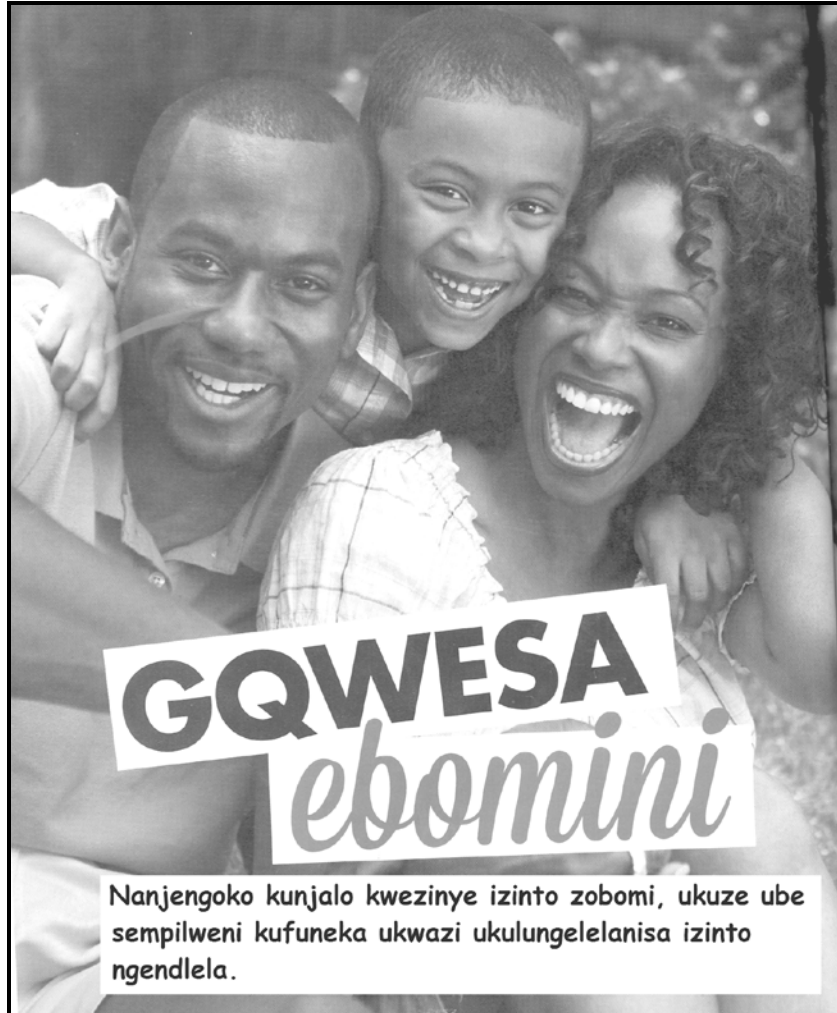
[Sithathwe kwincwadi, *Amazinga*, ibanga 8, nguPM Makubalo no KS Bongela, iphepha 76, saze sahlelwa]

- 5.1.1 Khetha isifanekisozwi kwesi sivakalisi silandelayo.
Galakangqa, ufafa olude lomfana ... (1)
- 5.1.2 Bhala ngamazwi akho okuthethwa sesi sivakalisi singezantsi.
'Into emkhitha ngathi ngowenkabi yehashe.' (2)

- 5.1.3 Nika igama elinye endaweni yesiqwengana esibhalwe ngqindilili kwesi sivakalisi silandelayo.
'... **lithambo elimhlophe elalibhijele umqala** lifuna ukumfanisa nehlungulu ...' (1)
- 5.1.4 Xela isigaba sentetho segama elibhalwe ngqindilili kwesi sivakalisi singezantsi.
'... kobo buso babuzele **uncumo** ...' (1)
- 5.1.5 Nika isichasi segama elikrwelelwe umgca ngaphantsi kwisivakalisi esingezantsi.
'... uncumo olwaluntama uthando olungazenzisiyo ...' (1)
- 5.1.6 Guqula isivakalisi esilandelayo sibe kwisininzi.
'Ebusweni wayetsho ngesiva ...' (3)
- 5.1.7 Xela ukuba sisakhi sini esi sikrwelelwe umgca ngaphantsi kweli binzana lingezantsi.
'... kucaca ukuba uyamfanisa.' (1)
- 5.1.8 Xela uhlobo lwegatya oluphawulwe ngomgca ngaphantsi.
'... emhlangabeza, kucaca ukuba uyamfanisa.' (1)
- 5.1.9 Khetha impendulo echanekileyo kwezi zingezantsi:
Isimamva u'-ana' kwisenzi esikwesi sivakalisi '... wenjenjalo nomhambi, baxhawulana.' sibonisa ukuba:
A Isenzo senzeka calanye.
B Isenzo sinakho ukwenzeka.
C Isenzo senzeka macala.
D Isenzo sesenguquko-mo. (1)
- 5.1.10 Bhala igama elithetha into enye nelibhalwe ngqindilili kwisivakalisi esingezantsi.
'Tyhini **bhota** Thole!' (1)
- 5.1.11 Sebenzisa igama elibhalwe ngqindilili kwesinye isivakalisi sinike intsingiselo eyahlukileyo kule ikwesi singezantsi.
'...esixhuzu-xhuzula **isandla**.' (1)

5.2 Funda lo mfanekiso uze uphendule imibuzo elandelayo.

ISICATSHULWA G: UMFANEKISO



[Uthathwe kwiBONA; Juni 2016; iphepha 58, waze wahlelwa]

5.2.1 Sebenzisa ngokuchanekileyo amagama akwizibiyeli kwisivakalisi esingezantsi.

Abazali (nwaba) umntwana (walo). (2)

5.2.2 Bhala ngokuchanekileyo esi sivakalisi silandelayo.

Usapho kakhulu olonwabileyo luthandeka. (2)

5.2.3 Guqula esi sivakalisi silandelayo sibe kwixesha elizayo.

Ukugqwesa ebomini kuzisa impumelelo. (2)
[20]

AMANQAKU ECANDELO C: 40
AMANQAKU EWONKE: 80